



# Repico®

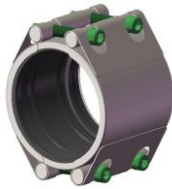
### 1. Repico® types

Repico® RH



Reparatie scharnierend

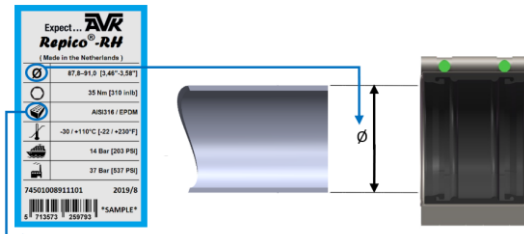
Repico® RSD



Reparatie dubbel

### 2. Installatie voorwaarden

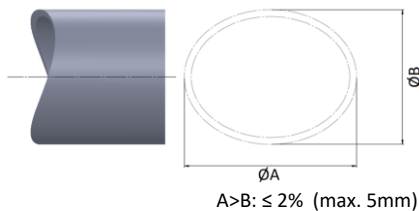
#### 2.1 Controleer label



Controleer maximale druk!

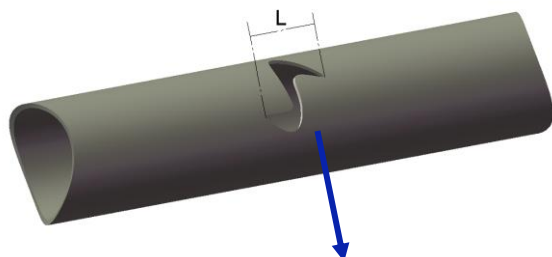
Rubber	
EPDM	-30 °C ↔ +110 °C
NBR	-25 °C ↔ + 80 °C
Silicone	-70 °C ↔ +200 °C
Viton	-30 °C ↔ +250 °C

#### 2.2 Ovaliteit



$A > B: \leq 2\%$  (max. 5mm)

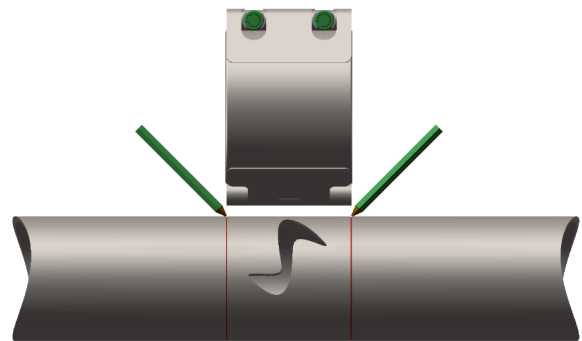
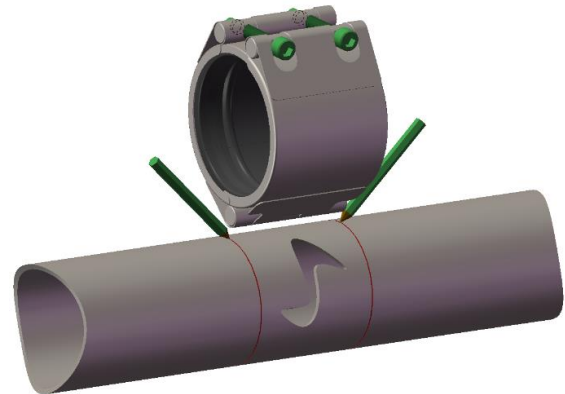
#### 2.3 Beschadigd deel



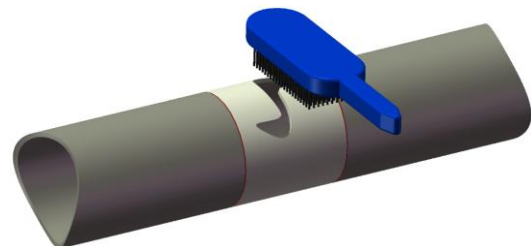
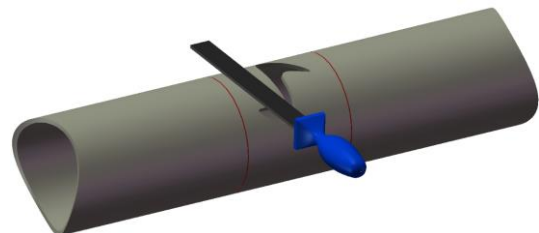
DN	L (Standaard)		L (Lang)	
	Beschadiging	Klem	Beschadiging	Klem
DN15-DN40	28mm	60mm	70mm	100mm
DN50-DN65	44mm	80mm	110mm	150mm
DN80-DN150	59mm	110mm	150mm	200mm
>DN200	89mm	150mm	185mm	250mm

### 3. Voorbereidingen

#### 3.1 Pijp markeren



#### 3.2 Pijp schoonmaken



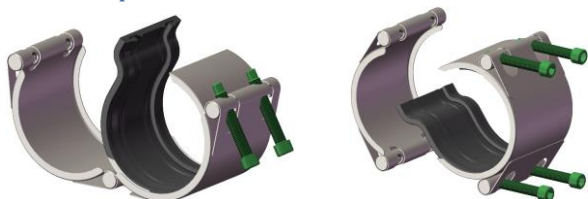


### 4. Montage

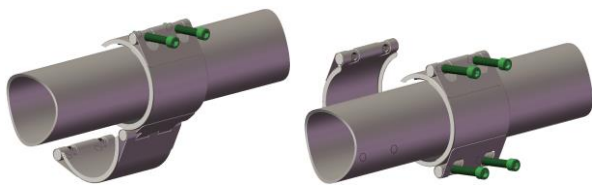
#### 4.1 Bouten losdraaien



#### 4.2 Openen klem



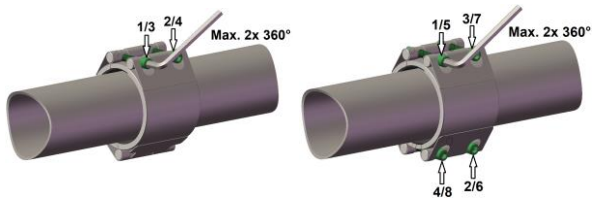
#### 4.3 Monteren klem



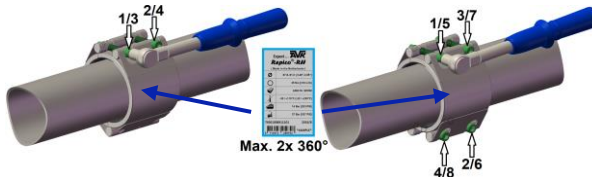
#### 4.4 Dichten klem



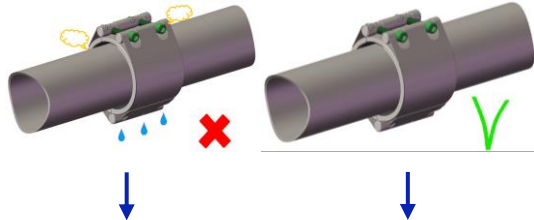
#### 4.5 Gedeeltelijk aandraaien



#### 4.6 Aanhaalmoment



#### 4.5 Lekkage controle (zicht en reuk)

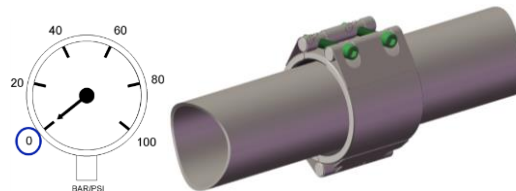


5.	Demontage
3.	Voorbereidingen
4.	Montage

Done

### 5. Demontage

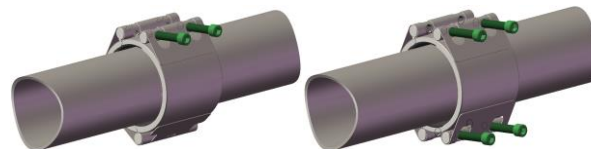
#### 5.1 Druk eraf



#### 5.2 Voorzichtig! - lekkage



#### 5.3 Bouten losdraaien



#### 5.4 Openen klem



#### 5.5 Assembleren voor hermontage

