



Repico®

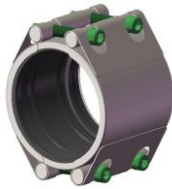
1. Repico® types

Repico® RH



Repair Hinge

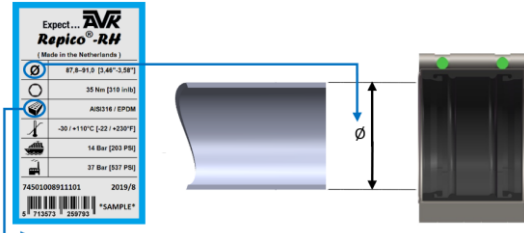
Repico® RSD



Repair Double

2. Installation conditions

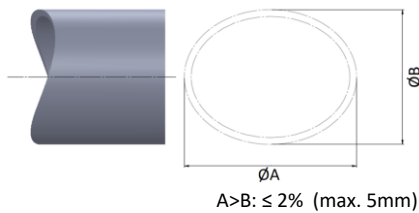
2.1 Check label



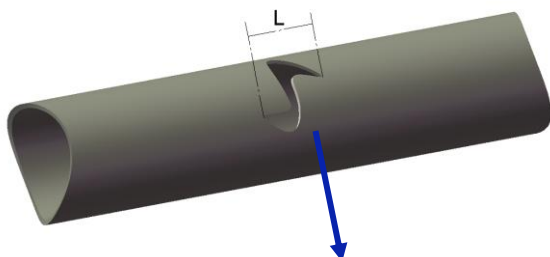
Check pressure rate!

Gasket	
EPDM	-30 °C ↔ +110 °C
NBR	-25 °C ↔ + 80 °C
Silicone	-70 °C ↔ +200 °C
Viton	-30 °C ↔ +250 °C

2.2 Ovality



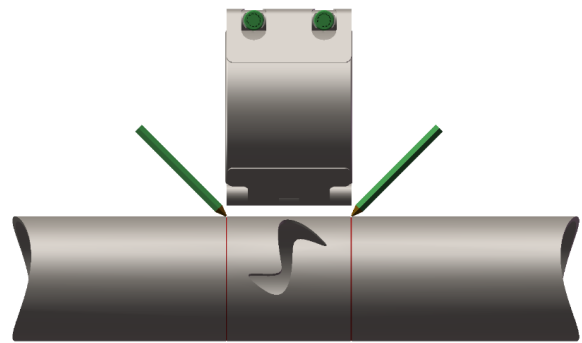
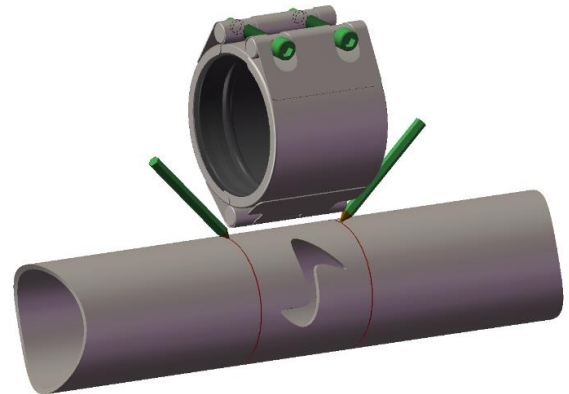
2.3 Damaged part



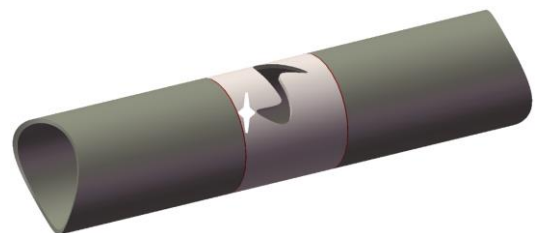
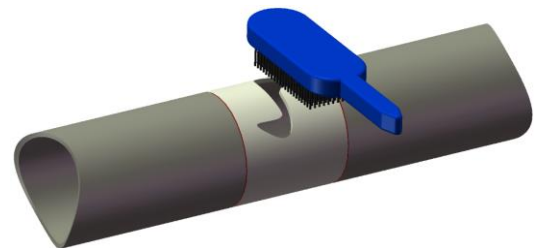
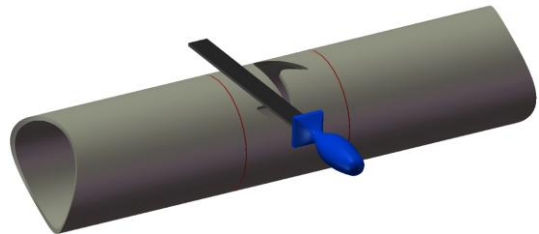
ND	L (Standard)		L (Long)	
	Damage	Clamp	Damage	Clamp
DN15-DN40	28mm	60mm	70mm	100mm
DN50-DN65	44mm	80mm	110mm	150mm
DN80-DN150	59mm	110mm	150mm	200mm
>DN200	89mm	150mm	185mm	250mm

3. Preparations

3.1 Mark pipe



3.2 Clean pipe





AVK REPICO® Repair clamp

Series 747

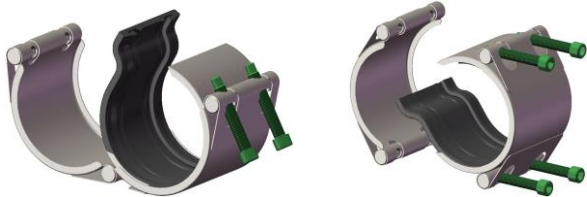
Mounting instructions

4. Assembly

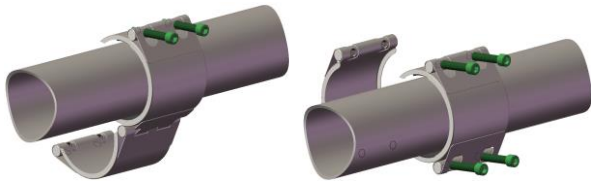
4.1 Loosen bolts



4.2 Open clamp



4.3 Mount clamp



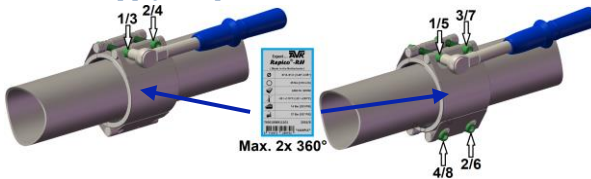
4.4 Close clamp



4.5 Tighten partial



4.6 Apply torque



4.7 Leakage control (look and smell)

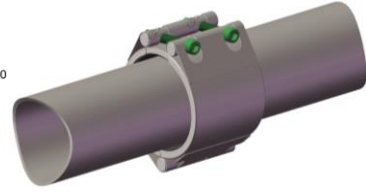
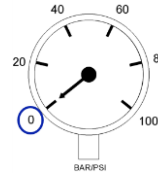


5.	Dissassembly
3.	Preparations
4.	Assembly

Done

5. Disassembly

5.1 Unpressurized



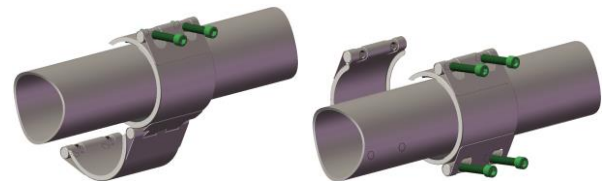
5.2 Careful - leakage



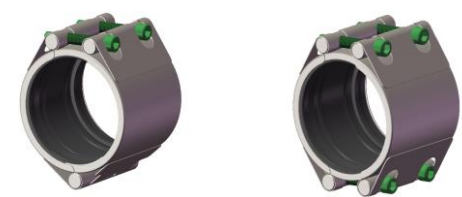
5.3 Loosen bolts



5.4 Open clamp



5.5 Reassemble for re-use



Expect... **AVK**