

AVK INDUSTRIAL NEDERLAND BV



**LIFE SCIENCE VALVE &
COUPLING SOLUTIONS**



TABLE OF CONTENT

Life Science solutions	3
InterApp.....	4
Wouter Witzel	5
CYL.....	6
DTL	7
Repico	8
Case Stories	9
AVK Your Long-Term Partner	10



AVK INDUSTRIAL NEDERLAND

LIFE SCIENCE SOLUTIONS

AVK Industrial Nederland, part of the AVK Group, is a leading supplier of high-quality valves and couplings for the industrial market in the Netherlands. AVK plays an increasingly important role within the Life Science sector thanks to a wide product range, fast delivery times and a customer-oriented approach.

Reliable partner

In the life science sector, safety, hygiene, and sterility are of paramount importance, and AVK Industrial positions itself as a reliable partner that meets the most stringent international standards. Our products are specifically designed for applications in the pharmaceutical industry, biotechnology, and the food and beverage sector, where quality is guaranteed by numerous certificates and full traceability. Every component is rigorously tested and approved before delivery, with comprehensive documentation and material certificates readily available to ensure the process integrity and business continuity of our customers.

Product Range

AVK's product range is engineered for a wide variety of critical processes, ranging from sterile cleanroom environments to complex steam applications such as CIP cleaning and flash steam peeling. In the food industry, we utilize specifically selected materials such as AISI 316 stainless steel for optimal corrosion resistance and butterfly valves with blue linings that comply with FDA and EC 1935/2004 regulations.

For pharmaceutical applications, we maintain strict restrictions on the ferrite content of our stainless steel valves to prevent rouging, while our gate valves with polished blades ensure that no residue is left behind in the system.

Brand portfolio

The AVK Industrial portfolio is further strengthened by renowned brands that each bring dedicated expertise to meet the highest industry demands. **InterApp** provides high-quality valves for critical applications, while **Wouter Witzel**, as a leading Dutch manufacturer, delivers reliability and compliance for the challenging food and beverage market. **DTL** offers solutions for airflow and emission control, whereas **CYL** provides robust knife gate valves for fluid processing and sludge. **Repico** delivers innovative couplings for fast and secure connections, and repair couplings. All brands are based in Europe, collectively resulting in a comprehensive package that stands for durability and optimal performance.



SAFETY, HIGH PURITY AND STERILITY

InterApp stainless steel valves are designed to meet the stringent requirements of the pharmaceutical, biotechnology, food, and cosmetics industries, where safety, purity, and sterility are essential. With extensive industry knowledge and a deep understanding of hygienic processing applications, InterApp develops valve solutions that comply with the highest standards for clean and sterile operations.

Global expertise and high-quality product standards are essential to meet the demanding requirements of the life science industries.

In sectors such as pharmaceuticals, biotechnology, food and beverage, and cosmetics, hygiene and safety are paramount. To address these needs, InterApp develops and manufactures specialized stainless steel valves with low dead-space designs and high-performance linings that comply with the strictest FDA and EC regulations.

InterApp has developed the Desponia® range of elastomer-lined butterfly valves. These valves feature blue liners specifically designed for better visibility, allowing for the fast detection of potential contaminants in the process line. Furthermore, mirror-polished stainless steel discs provide non-stick properties to ensure optimal hygiene. The Desponia® series meets the requirements of the food industry perfectly thanks to its wide variety of materials and combination possibilities, including EPDM, NBR, and MVQ liners that comply with EC 1935/2004 standards.

The Bianca PTFE-lined butterfly valve offers a sustainable and versatile solution. To meet the specific requirements of various industrial applications, the Bianca is available with ductile iron or stainless steel bodies and an extensive range of conductive disc and liner materials. By maintaining a high availability of semi-finished components, InterApp ensures short delivery times even for large-scale projects up to DN 900. This combination of technical excellence, durable materials, and first-class availability allows InterApp to realize the most efficient system solutions for the life science market.



Desponia® and Desponia® plus
Elastomer-lined butterfly valve

Bianca
PTFE-lined butterfly valve

THE RIGHT SELECTION FOR YOUR FOOD AND BEVERAGE PROCESSES



PTFE-lined ball valves
Full bore ball valves, execution with ceramic ball is available as option for abrasive applications.



Stainless steel ball valves
2- way valves in stainless steel, available with 2- or 3-piece body.



Check valves
Stainless steel check valves, Swing and Disco, are available in various executions.



Actuators and accessories
Actuators and a large range of accessories are available to complete the system

QUALIFIED VALVES FOOD & BEVERAGE

For more than 50 years, Wouter Witzel has been recognized as a trusted Dutch manufacturer of high-performance butterfly valves for demanding industrial applications. Specialized Food & Beverage valve series are fully compliant with Regulation (EC) No 1935/2004 for Food Contact Materials, ensuring safe use in applications such as fresh water, treated water, air, powders, and juices.



EV-F&B

FDA approved liner, EPDM-per

A leading Dutch manufacturer of butterfly valves and actuation solutions, delivering reliability and compliance for demanding Food & Beverage applications.

Combining Dutch engineering with certified materials, customizable actuation and controls, Wouter Witzel offers durable butterfly valve solutions with the best return on investment for the global food and beverage industry.

Wouter Witzel develops and manufactures high-quality butterfly valves designed in accordance with Regulation (EC) No 1935/2004 for Food Contact Materials, ensuring safety in food and beverage processing environments.

Its dedicated EV-F&B valve series combines proven Wouter Witzel technology with advanced hygienic features such as satin-finished discs (Ra max 0.8 µm), pin-less shaft-to-disc connections, integrated bearings for ultra-high operating cycles, shaft seals preventing contamination, and FDA-approved EPDM liners. Available in wafer, wafer-lug, and double-flanged versions, the valves are ideally suited for breweries, distilleries, treated water, air, powders, juices, and other food-contact applications.

With a strong focus on material qualification, traceability, documentation, and Good Manufacturing Practice, Wouter Witzel guarantees dependable valve performance, long service life, and full compliance for the international Food & Beverage industry.

CLEAN AND FAST. QUALIFIED VALVES FOR THE FOOD & BEVERAGE SEGMENT

EV-F&B The solution for Food & Beverage

The EC1935-compliant EV-F&B series is an advanced butterfly valve solution built on Wouter Witzel's long-proven valve technology. Enhanced with hygienic features such as a satin-finished disc, pinless shaft-to-disc connection, and a food-contact tested and approved elastomer liner, the series fully complies with EC1935/2004 regulations for Food Contact Materials.

Available in wafer, wafer-lug, and double-flanged configurations, the EV-F&B series is ideally suited for food-contact applications where black elastomers are permitted. Its reliable and hygienic design makes it an excellent choice for breweries, distilleries, and a wide range of Food & Beverage processing applications.





SPECIALISTS IN DIFFICULT FLUIDS

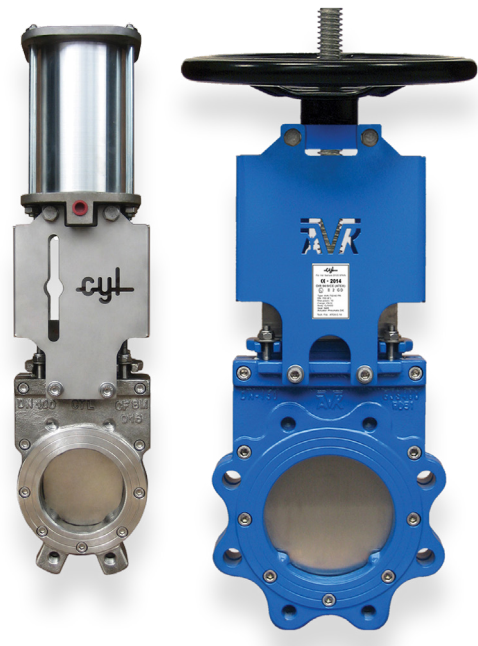
With over 25 years of expertise, CYL is a strategic partner in the Life Sciences sector. CYL provides high-precision knife gate valve solutions for chocolate and sugar factories, dairies, breweries, and wine cellars. Their reliable systems ensure sterile processing and rigorous compliance, delivering accuracy for critical food and beverage applications.

A partner in the design and manufacture of high-performance knife gate valves for Life Science applications.

CYL has established itself as a leading manufacturer of knife gate valves designed to perform in the most demanding environments, including Life Science applications and the food and beverage industry. From handling wastewater and sludge to managing abrasive or corrosive media, CYL valves deliver reliability where conventional solutions fall short.

In the food and beverage industry, CYL offers valve solutions tailored to the requirements of chocolate and sugar factories, dairies, breweries, and wine cellars. Our valves are designed for processing applications involving vegetables, sugar beet, cereals, syrups, juices, milk, beer, and wine, ensuring quality, hygiene, and precision in every process.

In addition, with over 25 years of experience in highly specialised process environments, CYL supports industries such as aquaculture and fish management, offering innovative and reliable solutions for fish handling and live fish management systems, adapted to the specific needs of this dynamic sector.



DESIGNED TO OPERATE WITH TOTAL GUARANTEE IN THE MOST EXTREME CONDITIONS.



CYL PR

Bi-directional resilient seated valve with adjustable stuffing box designed to handle clean/wastewater, as well as semi-solids, dry media, sludge and general industrial applications with solids content <20%.



CYL XD

Bi-directional resilient seated valve with adjustable packing material designed to handle clean/wastewater, semi-solids, dry media, sludge and general industrial applications with solids content <20%.



CYL SC SP

Bi-directional knife gate valve, resilient seated with frontal upper sealing with adjustable stuffing box mounted on top of the body. Designed to handle wastewater, mud, fish pump services, cruises, and general liquid media.



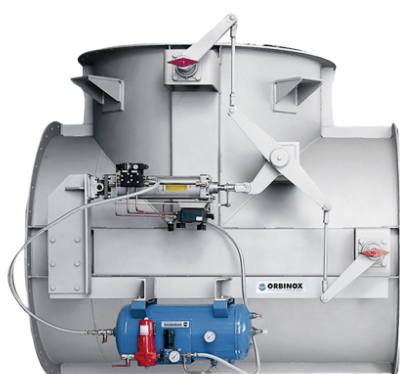
CYL SW

Uni-directional mecano-welded square valve, soft or metal-metal seated with adjustable stuffing box mounted on top of the body. Suitable to handle powders, granulates and highly solid loaded media.

DAMPER SOLUTIONS

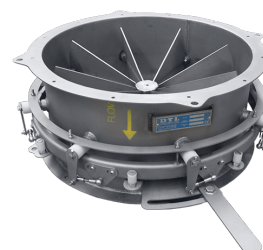


DTL delivers advanced damper solutions for various applications, including food and beverage, where the isolation, control and diversion of air and flue gases is critical for both processes and systems. With over 50 years of expertise and DNV-GL approved designs, DTL provides quick-delivery dampers engineered for durability and performance in harsh environments. Trusted worldwide, DTL combines innovation with reliability.



Inlet Vane Control Dampers

An IVC Damper (Inlet Vane Control) is predominantly installed to a centrifugal fan inlet to provide flow / pressure regulation and control. Manufactured in Carbon Steel or Stainless steel.



Butterfly Dampers

Cost effective method of control and isolation. Various sealing arrangements, including seal air fan. Manufactured in Carbon Steel, Stainless steel and special applications such as 800HT, 310S, Alloy 31, Alloy 59.

Your trusted partner for Life Science damper solutions

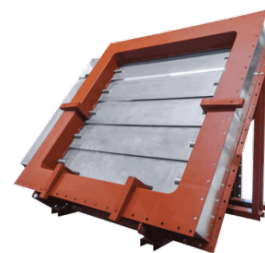
DTL is a trusted partner for high-performance damper solutions, supporting Life Science applications where precision, safety, and reliability are essential. With decades of engineering expertise and advanced 3D CAD design, DTL develops innovative and efficient damper systems tailored to demanding process environments.

Many Life Science facilities require high-specification solutions to manage strict operational and regulatory conditions, including temperature control, pressure stability, and contamination risks. DTL engineers design bespoke dampers that account for critical factors such as airflow, cleanliness, and installation constraints.

From concept to aftercare, DTL delivers reliable, compliant, and efficient solutions that ensure optimal performance in highly controlled environments.

Multilouvre Dampers

For larger duct sizes and applications that demand superior control. design with parallel blade action and opposed action depending on control needs. Manufactured in Carbon Steel or Stainless steel and specials.



Diverter Dampers

Either for isolation or control operation. Inlet and bypass configured individually. Manufactured in Carbon Steel, Stainless steel and special applications such as 800HT, 310S, Alloy 31, Alloy 59.

REPICO® COUPLINGS AND REPAIR COUPLINGS

Ensure fast and reliable pipe connections in Life Science environments with Repico® stainless-steel couplings, trusted by manufacturers and facility operators worldwide. Repico® offers quick installation, durable performance, and certified quality. Available with multiple rubber sealings including EPDM, NBR, Silicone, FKM, and custom designs, Repico® helps keep your processes running efficiently.

Experience the strength and flexibility of Repico® couplings, engineered in the Netherlands for reliable performance in Life Science applications.

At our production facility AVK Rewag in Vaassen – NL we added in recent years the highly qualified Repico® products to our extensive product range. With the Repico® stainless steel coupling you can quickly and easily create a tensile-resistant or flexible connection between two pipes. In case of a leakage, you can apply the Repico® repair coupling, with only a few minutes installation time.

With Repico® couplings you can join pipes simple, fast and reliable without flanging, threading, grooving or welding. The Grip- and Slip type couplings are the basic configurations for the Repico® pipe coupling system.

The Repico® grip type anchors in the pipe wall through grip rings, restraining the axial movement of the pipe in the coupling. If the axial tensile load on the pipe increases due to increasing internal pressure, the teeth engage deeper into the pipe surface. Sealing to the pipe wall is done by the rubber sealing material inside the coupling.

The Repico® slip type seals to the pipe wall by the rubber sealing material. As it has no grip rings the pipes need to be restrained outside the coupling. The expansion will be compensated through the allowable movement within the coupling. Depending on the size and application the Repico® slip couplings are also available in 2-, 3- or 4 lock versions.



Repico®S – Slip type coupling
(axially flexible/non axially restrained)

Repico®G – Grip type coupling
(axially restrained)

FROM PHARMACEUTICAL PRODUCTION FACILITIES TO BIOTECHNOLOGY OPERATORS, REPICO® DELIVERS RELIABLE PIPE CONNECTIONS



REPICO®GP
Grip plastic coupling. Tensile/axial restraint, for plastic pipes, stainless steel 316L.



REPICO®SD
Slip coupling two locks. Non-tensile / flexible, for all pipes, stainless steel 316L.



REPICO®SG
Slip grip coupling. Tensile/axial restraint – non-tensile, for all metal pipes, stainless steel 316L.



REPICO®RH
Hinge repair coupling. For all pipes, stainless steel 316L.

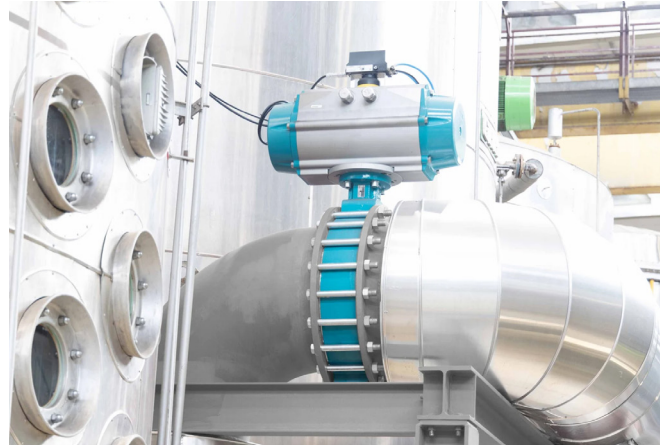
CASE STORIES - OUR LIFE SCIENCE SOLUTIONS IN ACTION

Our Life Science case stories highlight how our durable solutions ensure safety, efficiency, and long-term reliability. From sugar factories to dairy production and beverage applications, our products consistently perform under hygienic conditions.

InterApp supports reliable sugar production

To ensure uninterrupted production during peak processing periods, the Offenau plant of Südzucker AG relies on InterApp valve solutions throughout its operations. InterApp supplied a complete range of valves for chemical handling, syrup evaporation, vapour processes, beet processing, biogas installations, and pump protection.

The installation includes Bianca and Desponia® butterfly valves, knife gate valves, and Rhea swing check valves with both manual and pneumatic actuators. Thanks to their reliability and easy maintenance, the valves help optimise production efficiency while supporting the highest quality and safety standards year-round.



CYL valve solutions for the food and beverage industry

CYL provides reliable valve solutions designed specifically for the demanding requirements of the food and beverage industry. Their products are used in chocolate and sugar factories, dairies, breweries, and wine cellars, where hygiene, process reliability, and accurate flow control are essential.

CYL valves support a wide range of applications including the processing of vegetables, sugar beet, cereals, syrups, juices, milk, beer, and wine.

Engineered for consistent performance and easy integration into production systems, the valves help manufacturers maintain high product quality, improve operational efficiency, and ensure safe and reliable processing throughout every stage of production.

AVK YOUR LONG-TERM PARTNER

We believe in long-term partnership and in being close to our market, always putting the needs of our customers first. Our aim is to create a better world around us together with our customers, suppliers, employees and other stakeholders.

Respect for the Environment

Our products are used in vital infrastructures, including water supply, wastewater handling, energy supply, as well as a wide range of industrial applications that together contribute to sustainable development, people's health and an improved environment.

At AVK, we recognise that our global presence requires high ethical standards throughout our organisation and in all our actions. We want to be a responsible and credible company with the ability to balance economic, environmental, and social concerns. Therefore, we support international principles for responsible business operations and contribute to the UN's Sustainable Development Goals (SDGs).

Contribute to sustainable development

The United Nations' 17 Sustainable Development Goals (SDGs) provide the framework for global sustainable development efforts. The goals recognise that social, economic and environmental development are connected with each other and that a common, global effort is needed to achieve sustainable results.



Corporate Social Responsibility

We take our social responsibility seriously and are proud that we have achieved the CSR Performance Ladder level 4. Every year, AVK Industrial Nederland determines several CSR themes to which we will pay extra attention, based on our stakeholder analysis. With these themes we contribute to the United Nations Sustainable Development Goals (SDGs).

People and Environment

We attach great importance to People & Environment in our business operations. In addition to CSR, circular purchasing, the development of the Material Passports, sustainable production, recyclability of raw materials, end products and packaging materials, sustainable energy and social return are essential fundamentals of our business operations.





AVK Industrial Nederland BV

Schorsweg 1
8464 ME Vaassen
Nederland

Tel.: +31 (0) 578 560 602
E: info@avkindustrial.nl
W: www.avkindustrial.nl

© 2026 AVK GROUP A/S

